



AT-2

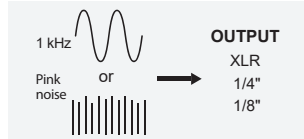
AUDIO TESTER

Pro
English Manual

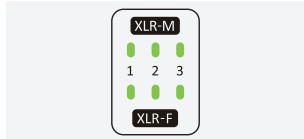
www.xvive.com

SPECIFICATIONS

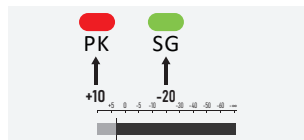
This versatile and compact utility tool includes detection features and offers five main functions: a **Signal Generator** that can emit 1 kHz tones or pink noise audio signals, an **XLR Cable Tester** for detecting whether XLR cables are damaged, **XLR Input Metering** to measure the strength of XLR input signals, a **Phantom Power Check** to test voltage and ensure normal operation, and **Headphone and Speaker Monitoring** to listen to input signals. It is suitable for testing powered PA speakers, effect pedals, cables, DI boxes, IEM systems, mixers, and other audio equipment, making it an essential tool for audio professionals.



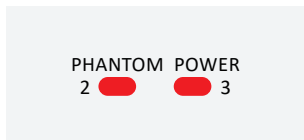
1. Signal Generator:
Outputs a 1 kHz sine wave or pink noise audio signal through XLR male, 1/4", and 1/8" connectors, with three output level options: -10 dB, -20 dB, and -40 dB.



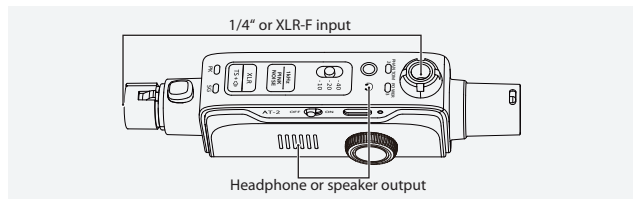
2. XLR Cable Tester:
Tests whether all three pins of the XLR cable are functioning properly.



3. XLR Input Metering:
Measures the input volume level of the XLR female connector.

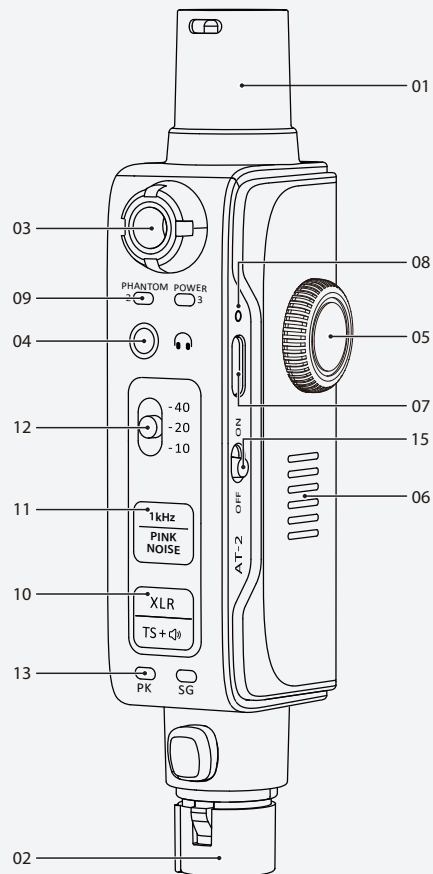


4. Phantom Power Check:
Tests the output voltage of the phantom power and ensures both pins are functioning properly.

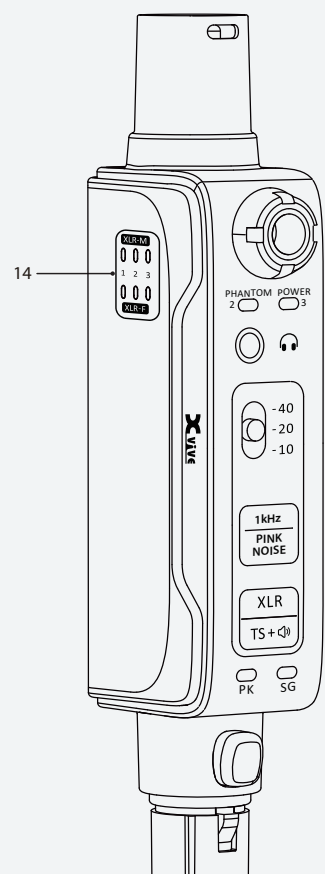


5. Headphone and Speaker Monitoring:
When an audio source is connected to the XLR female or 1/4" input, you can monitor the signal with headphones or speakers via the 1/8" headphone jack.

- 01 -



- 02 -



1. XLR-M output
2. XLR-F input
3. 1/4" output/input
4. 1/8" output
5. Speaker/headphone output volume knob
6. Speaker
7. USB type-C charging input
8. Charging LED
9. Phantom power pin voltage check
10. Output select: XLR / 6.35 mm (1/4"), 3.5 mm (1/8") and speaker
11. Output signal generator Type select (1 kHz sine wave or pink noise). Blinks when battery level is below 10%
12. Output volume pad select
13. Input volume check LED
14. XLR cable test LEDs
15. Power on/off

- 03 -

SIGNAL GENERATOR 1 kHz SINE WAVE AND PINK NOISE

You can use sine waves and pink noise to test the audio inputs of all kinds of audio gear—including DI boxes, guitar pedals, wireless systems, effect units, active speakers, mixers, etc.

OUTPUT

XLR: signal output via XLR
TS+Speaker: signal output via speaker, 6.35 mm (1/4") TS or 3.5 mm (1/8") TS

TYPE

Select 1 kHz sine wave or Pink Noise

OUTPUT LEVEL

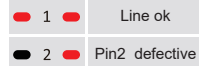
-10 dB, -20 dB, -40 dB

QUICK START

1. Select OUTPUT mode
2. Select 1 kHz sine wave or Pink Noise
3. Adjust the OUTPUT volume level

XLR CABLE TESTER

Connect an XLR cable to the input and output to test its 3 pins.
Hold TYPE for 2s to enter XLR cable test mode. The LED will automatically cycle through the pins.
Press TYPE to stop the cycle and manually select a pin.
Press OUTPUT to resume the automatic cycle.



LOW BATTERY

The 1 kHz/Pink Noise button will blink when the battery level is below 10%. Consider recharging your AT-2 when this 'low battery' warning appears.



- 04 -

PHANTOM POWER CHECK AND XLR PIN CHECK

Checks for phantom power voltage, which is individually metered on pins 2 and 3 of the output XLR. If the voltage detected is between 24V and 44V, the LEDs will flash slowly.

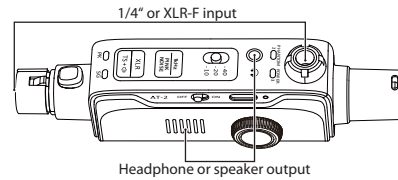
Activating phantom power on the input channel you are checking will allow you to simultaneously test all three pins in the XLR line.

PHANTOM POWER 2 3	PHANTOM POWER CHECK
PHANTOM POWER 2 3	Solid LED: Line ok Phantom power voltage: 44-52V
PHANTOM POWER 2 3	Flashing LED: Line ok Phantom power voltage: 24-44V
PHANTOM POWER 2 3	pin 1 defective
PHANTOM POWER 2 3	pin 2 defective
PHANTOM POWER 2 3	pin 3 defective

SPEAKER/HEADPHONE OUTPUT

The audio inputs are 1/4" TS and female XLR, and the output can be directed to either 1/8" headphones or a speaker, as selected on the TS+SPEAKER button. The volume knob controls the volume for both the headphones (1/8") and the speaker.

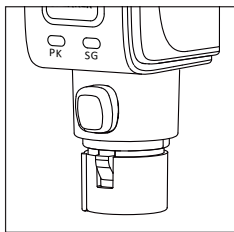
For more accurate signal monitoring, plug in your headphones. Regardless of the selected output mode, any audio signal input via 1/4" will be sent directly to both the speaker and headphone output.



XLR INPUT METERING

The PK (peak) and SG (signal) LEDs will illuminate according to the RMS amplitude of the signal present on the input XLR. The SG LED is lit when the signal exceeds -20 dBu RMS, and the PK LED lights up when the signal exceeds +10 dBu.

'SG' lights up when signal is detected.
'PK' lights up when the signal is very loud. This feature is very useful in noisy environments, or if you can't get your ears close enough to the speaker.



- 05 -

CHARGING

Charge your AT-2 using a standard USB-C cable and any 5V/2A USB power supply. A full charge cycle takes about 1.5 hours. Although the device can operate while charging, it's not recommended. For optimal performance and faster charging, do not use the unit while charging.

The LED by the USB-C port lights up while the battery is charging, and turns off when the battery is fully charged.

ALERT

Always power down your AT-2 after use. Depleting the battery may cause irreversible damage, resulting in the device being unable to power on again.

TYPICAL VALUES AND TOLERANCES

GENERATOR	XLR BALANCED JACK	1/4" UNBAL JACK
1 kHz Tone (± 1 dB)	-40,-20,-10 dBu	-40,-20,-10 dBu
Pink Noise (± 1 dB)	-40,-20,-10 dBu	-40,-20,-10 dBu

INPUT METER	XLR BALANCED JACK	1/4" UNBAL JACK
'SG' Threshold	-20 dBu	n/a
'PK' Threshold	+10 dBu	n/a

IMPEDANCE	XLR BALANCED JACK	1/4" UNBAL JACK
Output	350 Ω	600 Ω
Input	3 k Ω	600 Ω / 3.5 k Ω

VOLTAGES	XLR BALANCED JACK	1/4" UNBAL JACK
Phantom Power	solid: 44 - 52 V flashing: 24 - 44 V	n/a
Cable Tester DC	3.3 V	n/a

- 06 -

FCC REGULATION WARNING

This equipment has been tested and found to comply with the limits for a Class B digital device, pursuant to part 15 of the FCC Rules. These limits are designed to provide reasonable protection against harmful interference in a residential installation. This equipment generates, uses and can radiate radio frequency energy and, if not installed and used in accordance with the instructions, may cause harmful interference to radio communications. However, there is no guarantee that interference will not occur in a particular installation. If this equipment does cause harmful interference to radio or television reception, which can be determined by turning the equipment off and on, the user is encouraged to try to correct the interference by one or more of the following measures:

- Reorient or relocate the receiving antenna.
- Increase the separation between the equipment and the receiver.
- Connect the equipment to an outlet on a circuit different from that to which the receiver is connected.
- Consult the dealer or an experienced radio/TV technician for help.

INFORMATION ABOUT COLLECTION AND DISPOSAL OF OLD ITEMS AND USED BATTERIES



These symbols on the products, packaging, or on any documents in the package mean it is incorrect to mix the used electrical and electronic products and batteries with general household garbage.

To protect our environment, please take old products and used batteries to proper collection places, and follow your national legislation and the Directives 2012/19/EU and 2006/66/EC.



To deal with these old products and batteries properly, please help to save valuable resources and prevent any possibility of side effects on human health and our environment due to the inappropriate disposal of the old products and used batteries.



[For business users in the European Union]

If you want to discard electrical and electronic item, please contact your dealer or supplier for further information.

[Information on Disposal in other Countries outside the European Union]
These symbols are only valid in the European Union. Please contact your local authorities or dealer for more information on disposal of old items and used batteries.

- 07 -

CAUTION: RISK OF ELECTRIC SHOCK. DO NOT OPEN.



The lightning flash with arrowhead symbol within an equilateral triangle is intended to alert the user to the presence of uninsulated "dangerous voltage" within the product's enclosure that may be of sufficient magnitude to constitute a risk of electric shock to persons.



The exclamation point within an equilateral triangle is intended to alert the user to the presence of important operating and maintenance (servicing) instructions in the literature accompanying the product.

WARNING:
TO REDUCE THE RISK OF FIRE OR ELECTRIC SHOCK, DO NOT REMOVE SCREWS. NO USER-SERVICEABLE PARTS INSIDE. REFER SERVICING TO QUALIFIED SERVICE PERSONNEL.

WARNING:
TO REDUCE THE RISK OF FIRE OR ELECTRIC SHOCK, DO NOT EXPOSE THE APPLIANCE TO RAIN OR MOISTURE.

SAFETY INSTRUCTIONS FOR LITHIUM-ION RECHARGEABLE BATTERIES

- If abused or misused, rechargeable batteries may leak. In extreme cases, they may present a risk of explosion, fire, heat, smoke, or gas. Xvive does not accept any liability for damage arising from abuse or misuse.
- Only charge rechargeable batteries with chargers recommended by Xvive.
- Observe correct polarity.
- Do not continue to use damaged rechargeable batteries.
- Only use rechargeable batteries specified by Xvive.
- Dispose of rechargeable batteries at designated collection points or return them to your specialist dealer.
- WARNING- Batteries or the product in which they are installed shall not be subject to:
 - replacement of a battery with an incorrect type that can defeat a safeguard (for example, in the case of some lithium battery types).
 - disposal of a battery into fire or a hot oven, or mechanically crushing or cutting of a battery, that can result in an explosion.
 - leaving a battery in an extremely high-temperature surrounding environment that can result in an explosion or the leakage of flammable liquid or gas.
- Keep out of reach of children.
- Do not expose the product to moisture.
- Switch rechargeable battery-powered products off after use.
- Only charge the units at ambient temperatures between 10°C (50°F) and 40°C (104°F).
- Do not mutilate or dismantle the product or its batteries.
- Do not heat above 60°C (140°F). Do not expose to direct sunlight or throw into a fire.
- If your product appears defective, stop using it immediately and contact your authorized dealer or Xvive support.
- Store the product in a cool and dry place at room temperature (approx. 20°C / 68°F).

- 08 -

USE OF POWER ADAPTER

- Please use a power adapter with the local country certification label.
- Please check the supported voltage and current of the power input and output.
- Please read the warning indications on the power adapter carefully before use.
- When pulling out the power plug from the socket, please hold the plug part of the power cord.
- Please disconnect the power adapter plug from the socket when not using the device for a long time or when there is a lightning strike.

CARE OF DEVICE

1. Do not drop, hit, or apply excessive force to the device.
2. Handle with care and avoid any objects or liquids entering the device.
3. Do not place the device in a place with excessively high or low temperature.
4. Do not place the device near heat sources, such as heaters or ovens.
5. Do not place the device in a place with excessively high humidity or with splashing water.
6. Do not place the device in a place with frequent shaking.
7. Do not place the device in a place with excessive sand or dust.

CLEANING OF DEVICE

1. Use a soft dry cloth to wipe off dirt on the exterior of the device.
2. You can slightly dampen a cloth to remove stubborn dirt.
3. When the rubber or silicone parts of the device are stained, use a lint-free cloth slightly dampened to clean.
4. Do not use abrasive cleaners, wax, alcohol, benzene or paint thinner as a solvent to wipe the device.

OPERATION OF DEVICE

1. Before connecting any device, please make sure to turn off all device power.
2. Before moving the device, please disconnect all connection cables.
3. Long-term continuous use of the device may cause it to slightly heat up. Touching it without a burning sensation is normal.
4. Do not hold the device with power on for a long time. Avoid holding it continuously for a long time during use when it is heating up.
5. Do not use the device for a long time at high volume.



Declaration of Conformity:
This product complies with the requirements of EMC Directive 2004/108/EG and Low Voltage Directive 2006/95/EC

- 09 -

ONE-YEAR LIMITED WARRANTY

Xvive Corporation Ltd. [Xvive] warrants our products to be free of defects in materials and workmanship in normal use for a period of one (1) year from the date of original purchase. Please visit <https://www.xvive.com> to register your new purchase.

Xvive will, at its sole discretion, or in cooperation with our authorized retailers, repair or replace at no charge, any unit that is inspected by Xvive or an affiliated Xvive service center and deemed to be defective within the warranty period. This warranty is non-transferrable.

This warranty is only valid to the original purchaser, only when purchased "new-in-box" from an Authorized Xvive Dealer and with a valid proof of purchase bearing the purchase date.

Within the USA:

- All Xvive warranty claims should be made with the retailer from which the unit was purchased. This applies to both retail stores and online retailers.

Outside of the USA:

- For all warranty and non-warranty claims, the purchaser should contact the Authorized Xvive Retailer from which the unit was purchased within the country or province in which it was purchased for information on how to obtain warranty or non-warranty service.

This limited warranty does not cover the following:

- Products that have been modified in any way;
- Any products whose serial numbers have been altered or removed;
- Exterior cosmetic damage or damage to the finish due to misuse or normal wear and tear;
- Products that were purchased as "used", items listed as demo stock or refurbished items;
- Damage to the product or parts caused by improper storage by the user;
- Any freight charges (from or to the retailer);
- Shipping Damage:
 - Shipping damage claims must be filed with the freight carrier (such as UPS, FedEx).
 - Notify the freight carrier immediately of any shipping damage upon receipt of damaged items to begin the claim process.
 - We also recommend reporting any shipping damage claim within 48 hours of receipt to the Authorized Retailer from which the item was purchased.
- Keep all original documents and packing materials until the freight damage claim has a final resolution.

For units returned to Xvive USA:

- The item must be returned in the same format in which it was purchased. If a system containing a transmitter and receiver was purchased, then both units will need to be returned together.
- The purchaser will pay all freight charges to return the original item to Xvive USA or its affiliated service centers.

EUROPEAN PATENT NO: 015105584-0001
UK PATENT NO: 6448741



SHENZHEN FZONE TECHNOLOGY CO., LTD.
2nd floor, Building 12, Xichang Industrial Area, Xixiang Town,
Baoan District, Shenzhen Guangdong China. 518101
E-mail: support@xviveaudio.com
Tel: +86-755-2786 6639

- 11 -

折线

折线

折线

折线

折线

料号: 111081544 AT-2 说明书 展开尺寸: 540*145mm 成品尺寸: 90*145mm 材质: 100G书纸 彩色印刷 风琴折