



# BATTERIES + BATTERY CHARGER

For Xvive U5 Wireless Audio For Video System

## IMPORTANT SAFETY INSTRUCTIONS

PLEASE READ THESE INSTRUCTIONS AND KEEP THEM IN A SAFE PLACE

### WARNING:

BEFORE USING YOUR XVIVE WIRELESS AUDIO FOR VIDEO SYSTEM, CAREFULLY READ THESE OPERATING INSTRUCTIONS:

1. Observe all instructions in the U5 manual carefully.
2. Do not perform service operations beyond those described in the U5 manual. Service is required when the apparatus has been damaged in any way, such as:
  - Liquid has been spilled or objects have fallen into the apparatus;
  - The unit has been exposed to rain or moisture;
  - The unit does not operate normally, or performance changes in a significant way;
  - The unit is dropped or the enclosure is damaged
3. Do not place near heat sources, such as radiators, heat registers, or appliances that produce heat.
4. Guard against objects or liquids entering the device. Do not use or place unit near water.
5. Clean only with a dry cloth.
6. Only use attachments/accessories specified by Xvive.
7. Prolonged listening at high volume levels may cause irreversible hearing loss and/or damage. Always be sure to practice "safe listening."

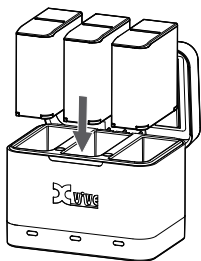
## SAFETY INSTRUCTIONS FOR LITHIUM-ION RECHARGEABLE BATTERIES

If abused or misused, the rechargeable batteries may leak. In extreme cases, they may even present a risk of:

- explosion,
- fire,
- heat,
- smoke or gas. Xvive does not accept any liability for damage arising from abuse or misuse.
- Keep away from children.
- Only charge rechargeable batteries with chargers recommended by Xvive.
- Observe correct polarity.
- Pack/store charged rechargeable batteries so that the terminals cannot contact each other, in order to avoid the risk of shorting out/fire hazard.
- Do not expose to moisture.
- Switch rechargeable battery-powered products off after use.
- Only charge rechargeable batteries at ambient temperatures between 10°C/50°F and 40°C/104°F.
- When not using rechargeable batteries for extended periods of time, charge them regularly (about every three months).
- Do not mutilate or dismantle.
- Do not heat above 60°C/140°F, e.g. do not expose to sunlight or throw into a fire.
- Immediately remove rechargeable batteries from obviously defective products.
- Do not continue to use defective rechargeable batteries.
- Only use rechargeable batteries specified by Xvive.
- Dispose of rechargeable batteries at a household e-waste collection point or battery-recycling drop off location.
- Store the products in a cool and dry place at room temperature (approx.20°C/68°F).
- Remove the rechargeable batteries if the products will not be used for extended periods of time.

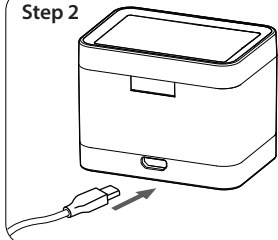
## HOW TO USE

### Step 1



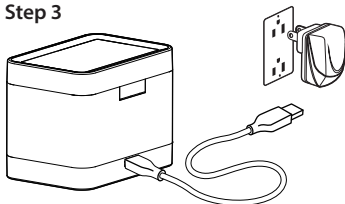
Insert the USB batteries into the charger so that the battery and charger connectors line up.

### Step 2



Insert the USB end of the included USB cable into the USB port on the Battery Charger.

### Step 3



Insert the other end of the USB cable into a wall charger, auto charger, or power bar USB outlet.

## CHARGING STATUS

The indicator LEDs are red while the batteries are charging, and turn green once charging is complete.

## CHARGING TIME

Batteries charge from 0% to 100% in 2 hours.

## COMPATIBILITY

For use only with Xvive USB Rechargeable Batteries.

## BATTERY DISPOSAL

In some areas, lithium-ion batteries are classified as non-hazardous waste and are safe for disposal in the normal municipal waste stream. However, many localities have laws in place requiring battery recycling, so check your local laws before disposing of rechargeable batteries in your regular trash. If necessary, take them to a battery-recycling drop-off location.

To safely dispose of lithium-ion batteries, protect terminals from exposure to other metal with packing, masking or electrical tape so they do not cause a fire while being transported. Never expose a battery to fire because it may explode.

## FEATURES

**Supported Battery:** Xvive USB  
**Input:** 5V 2A

**USB Connector System:** USB Micro-B  
**Output (maximum per battery):** 4.35V 800mA

## WHAT'S IN THE BOX?

1. Battery charger (x1) 2. Battery (x3) 3. USB charging cable (x1) 4. Manual (x1)



MADE IN CHINA

SHENZHEN FZONE TECHNOLOGY CO., LTD.

2nd floor, Building 12, Xicheng Industrial Area, Xixiang Town, Baoan District, Shenzhen Guangdong China. 518101

www.xviveaudio.com